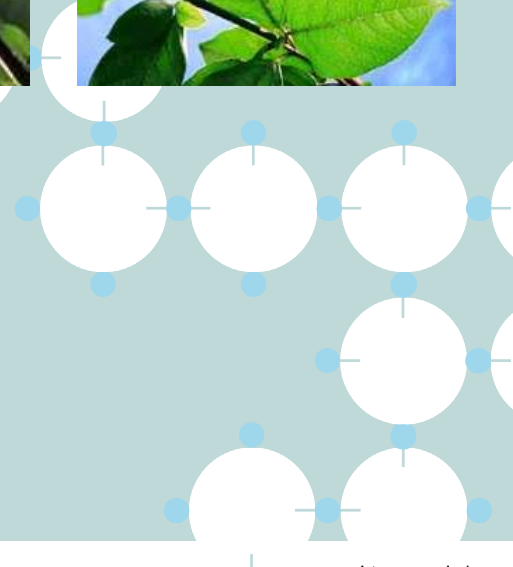


University of Kassel

The University of Environmental Sciences



Prof. Dr. A. Roßnagel



University of Kassel

Fields of Expertise

Human



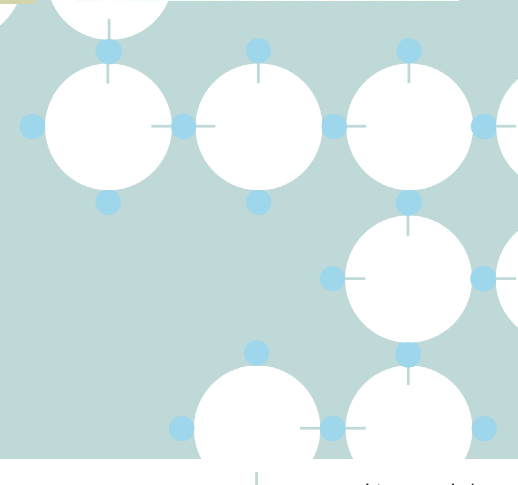
Environment



Art



Technology



Environmental Research

Center for
Environmental
Systems Research



Institute of Water,
Waste, and
Environmental Sciences



Institute of Solar
Energy Technology



Institute of Electrical
Engineering /
Energy Supply Systems



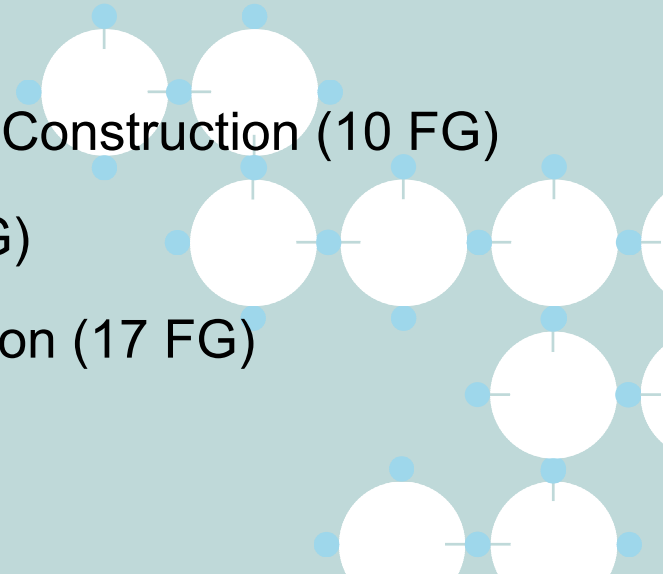
Faculty of
Organic Agricultural
Sciences



Centre of
Environmentally
Conscious
Construction

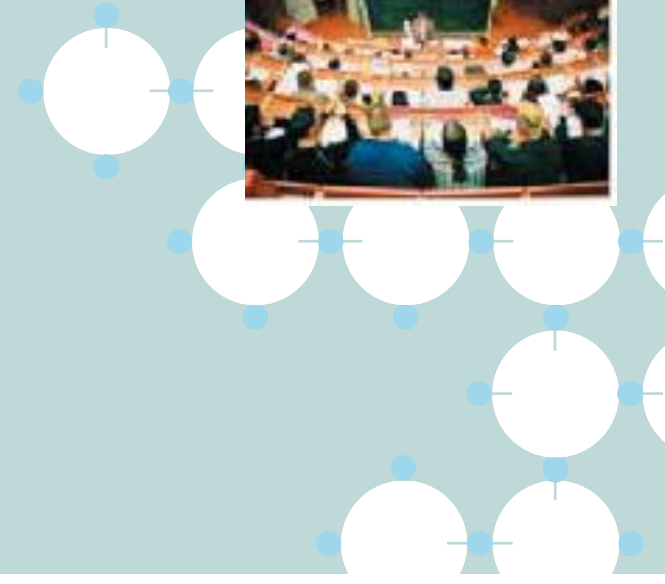
Focuses of Environmental Research

- Sustainable Resource Management (10 FG)
- Integrated Water Management (9 FG)
- Renewable Energy Systems and Energy Efficiency (14 FG)
- Bioenergy Research (25 FG)
- Environmentally Conscious Design and Construction (10 FG)
- Environmental Systems Modelling (8 FG)
- Climate Change Mitigation and Adaptation (17 FG)



Environmental Study

- **80 Professors** research and teach environmentally conscious topics
- **Environmental courses** – over 200 per academic year
- **18 Courses of study** with main environmental topics, such as:
 - Architecture
 - Environmental Engineering
 - Civil Engineering
 - Electrical Engineering
 - City and Regional Planning
 - Organic Agricultural Sciences
 - Industrial Engineering
 - Economics



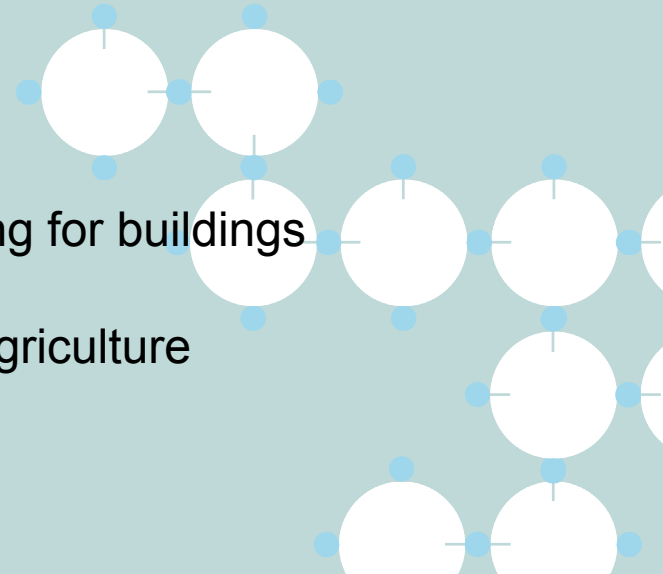
Postgraduate Environmental Study

- **gradZ – Umwelt**

First graduate school of environmental studies and research in Germany.



- 13 Master programs in 4 areas of study:
 - > Agriculture and Food Sciences
 - > Economy and Environment
 - > Energy and Material Sciences
 - > Sustainable Design and Construction
- 4 Graduate programs
 - > SolNet - Advanced solar heating and cooling for buildings
 - > Human-Environmental-Systems
 - > Humus and nutrient regulation in organic-agriculture
 - > Earth Systems Modelling



Additional Qualifications in Environmental Studie

- **Certificates of Study**

- Environmental Law
- Innovation Management: Technology and Product Quality Assessment
- Energy and the Environment

- **International Winter and Summer University**

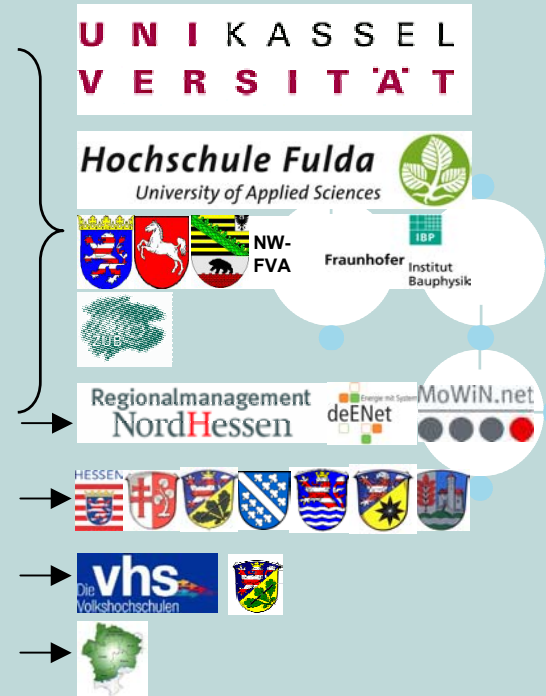
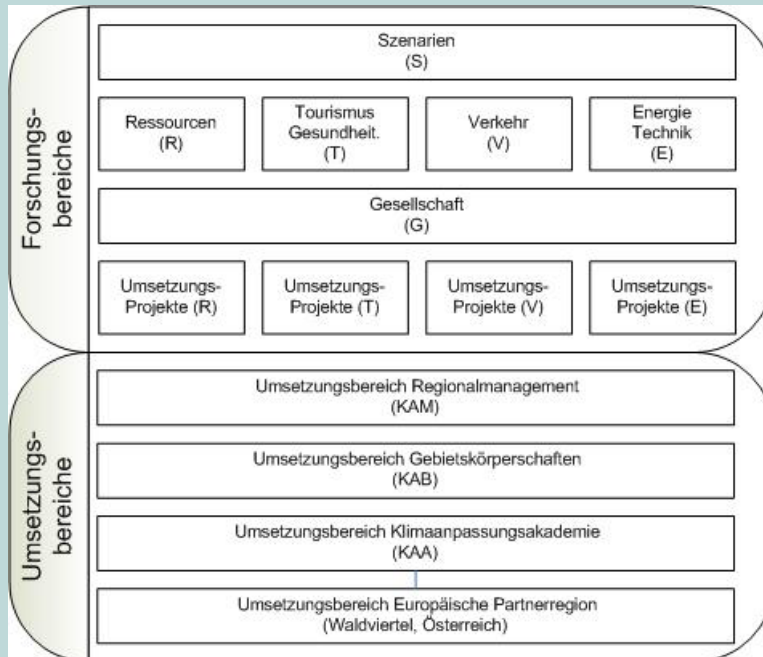
- Environmental Engineering, Water and Environment
- Integrative Environmental Studies
- Civil Engineering
- Environmental Business and Politics



IWU
ISU

KLIMZUG

- „Network for climate adaptation in the model region of northern Hesse“
 - Type of grant: 5 German regions in 5 years
 - Founding ministry: BMBF
 - Project structure:
 - Subsidy amount: approx. 10 million €
 - Partners:



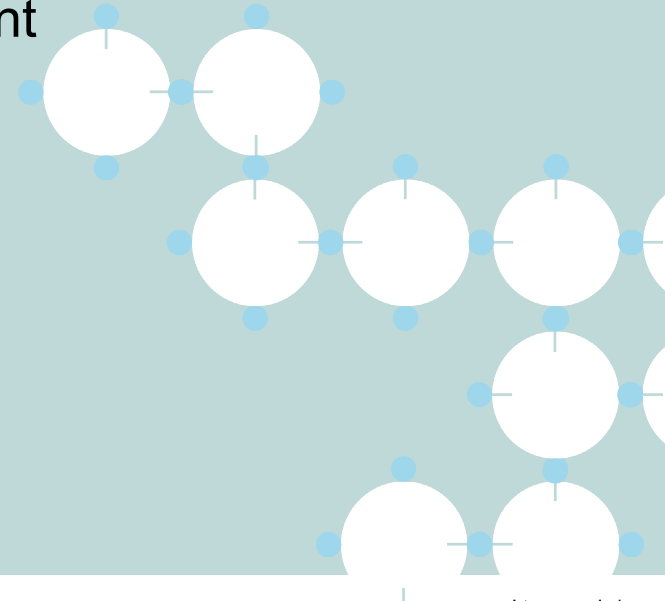
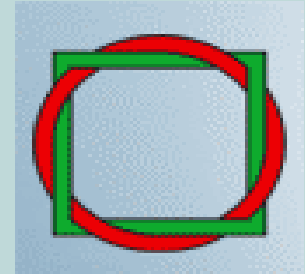
Cooperation in Environmental Sciences

- **Wuppertal Institute for Climate, Environment, and Energy**

Research aim: a “Sustainability Initiative”, developed in the model region of the state of North Rhine Westphalia and the state of Hesse.

- Renewable Energy and Climate Protection
- Current and Future Transportation
- Material and Resource Flow Management
- Sustainable Consumption
- Sustainability and Globalisation

- Teaching
- Postgraduate education



Cooperation in Environmental Sciences II

- **Environmental Research Centre Leipzig/Halle**

- Environmental Systems Modelling
- Water Resource Management
- City and Regional Research
- Environmental Governance

- Structural planning (visiting professorships)
- Courses of study, graduate schools



- **Further cooperation:**

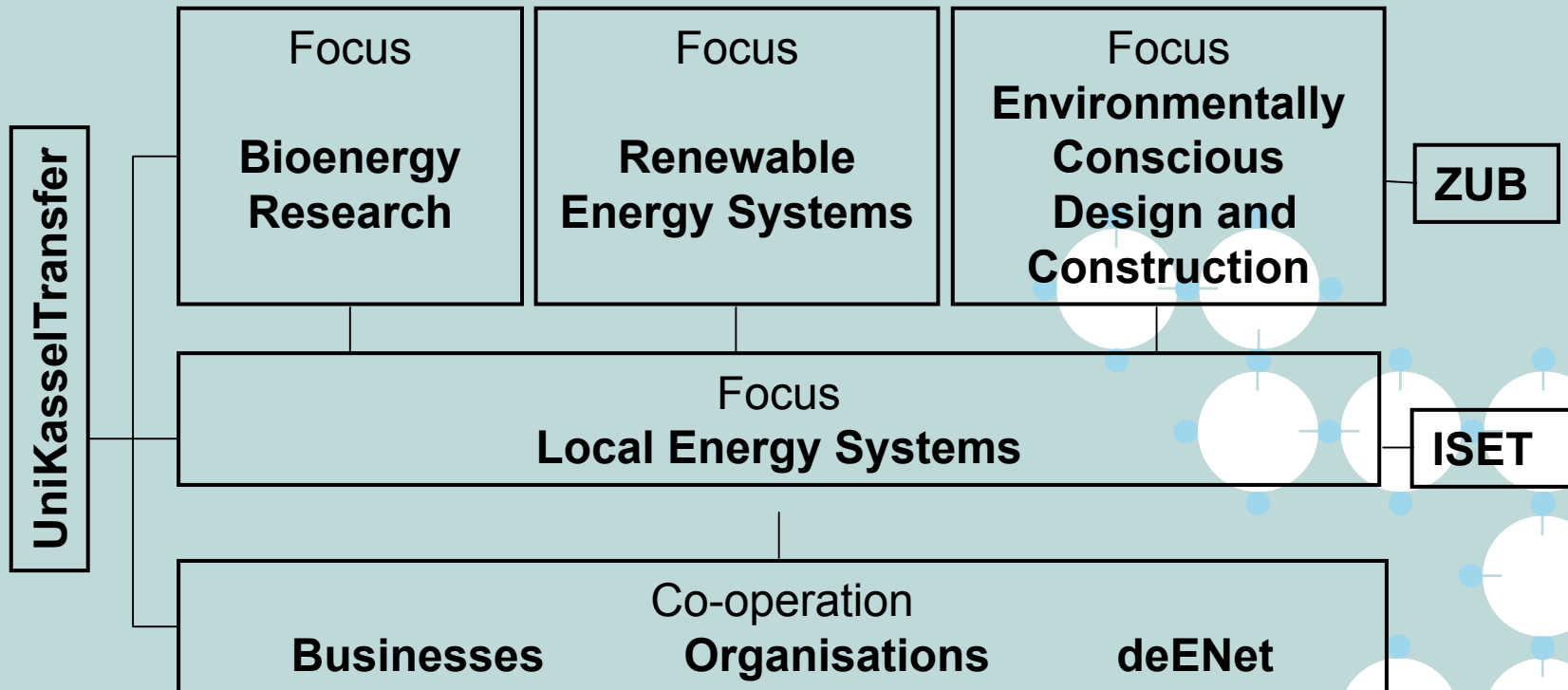
- Other universities (e.g. Fulda University, University of Oldenburg)



Local Co-operation in Environmental Sciences

Example:

Interdisciplinary research association in the topic of „energy and environment“



University of Kassel

The University of Environmental Sciences



Thank you for your attention!

